

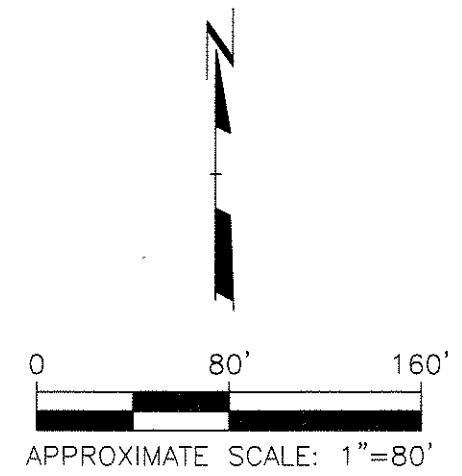
Attachment K - Lead, PAH and Groundwater Maps

LEGEND

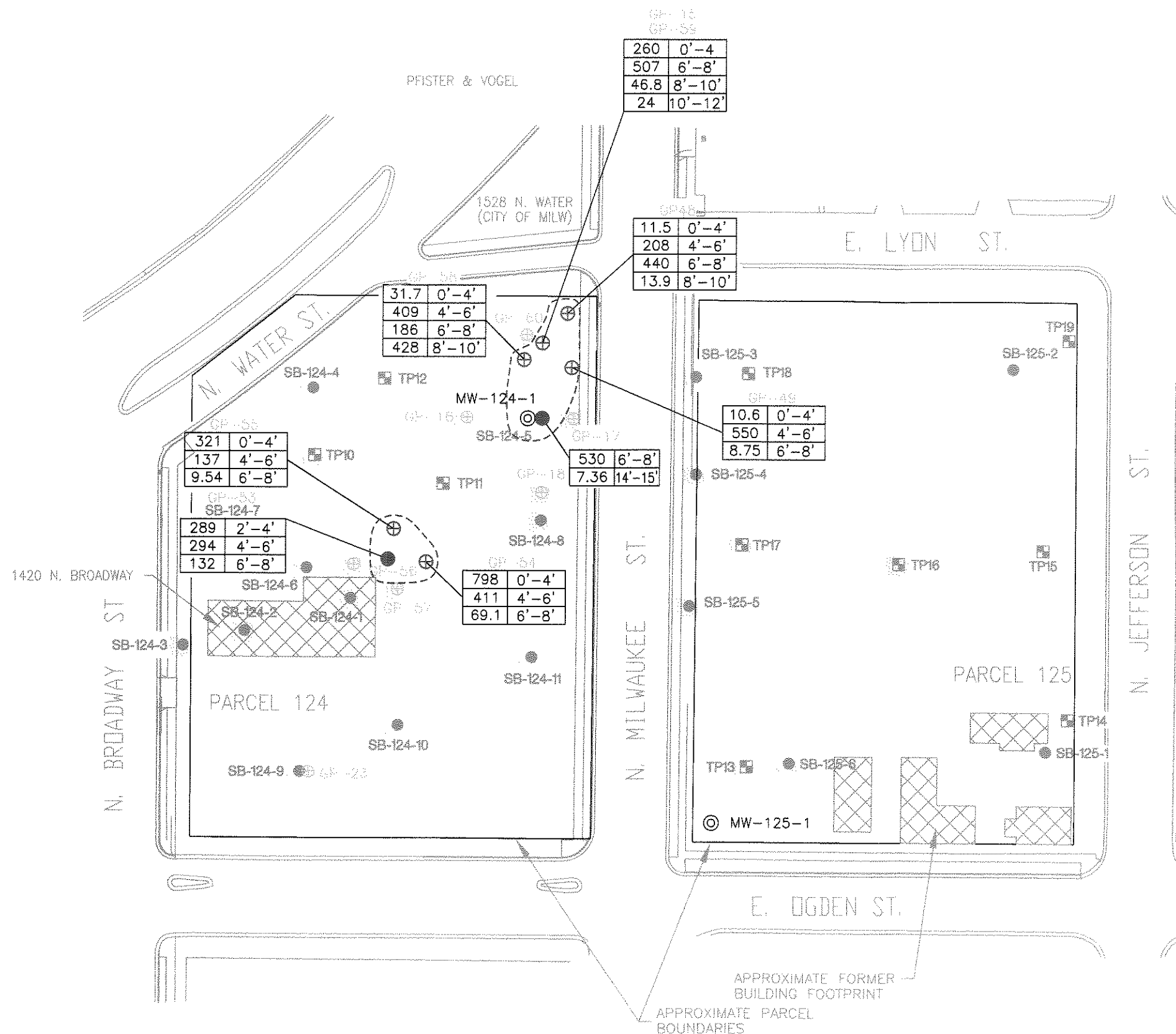
- SB-124-4 APPROXIMATE SOIL BORING LOCATION INSTALLED JUN 2001
 - ⊕ SB-124-2 APPROXIMATE TEMPORARY WELL LOCATION INSTALLED JUN 2001
 - ⊠ TP11 APPROXIMATE TEST PIT LOCATION ADVANCED JUN 2003
 - ⊕ GP-11 APPROXIMATE SOIL BORING LOCATION INSTALLED NOV 2003, APR 2004, OR JUN 2004
 - ⊙ MW-149-1 APPROXIMATE MONITORING WELL LOCATION INSTALLED NOV 2003
-
- 324 | 4'-6'**
-
- ⊠
- APPROXIMATE AREA OF TOTAL LEAD ≥250 mg/kg WITHIN UPPER 4 FEET OF SITE SOILS (DASHED WHERE INFERRED)

NOTES

1. BASE MAP FROM 2001 PHASE II REPORT FOR REDEVELOPMENT AREAS BY HNTB AND FROM WISDOT CONSTRUCTION DRAWINGS FOR PARK EAST FREEWAY.
2. COMPOSITE SAMPLE COLLECTED FROM TP-10, TP-11 AND TP-12 CONTAINED <250 mg/kg TOTAL LEAD.
3. COMPOSITE SAMPLE COLLECTED FROM TP-13, TP-16, TP-17 AND TP-18 CONTAINED <250 mg/kg TOTAL LEAD.
4. BOLD RED SOIL BORING LOCATIONS INDICATE THAT TOTAL LEAD WAS DETECTED ≥250 mg/kg IN AT LEAST ONE SOIL SAMPLE COLLECTED FROM THIS LOCATION.



**TOTAL LEAD IN SOIL >250 mg/kg
FORMER PARK EAST FREEWAY
REDEVELOPMENT AREA 3
MILWAUKEE, WISCONSIN**



	DWN. BY: MHS
	APPROVED BY: KWY
	DATE: JULY 2004
	PROJ. # 00-06493.02
	FILE # 64930203.DWG

FIGURE 4

LEGEND

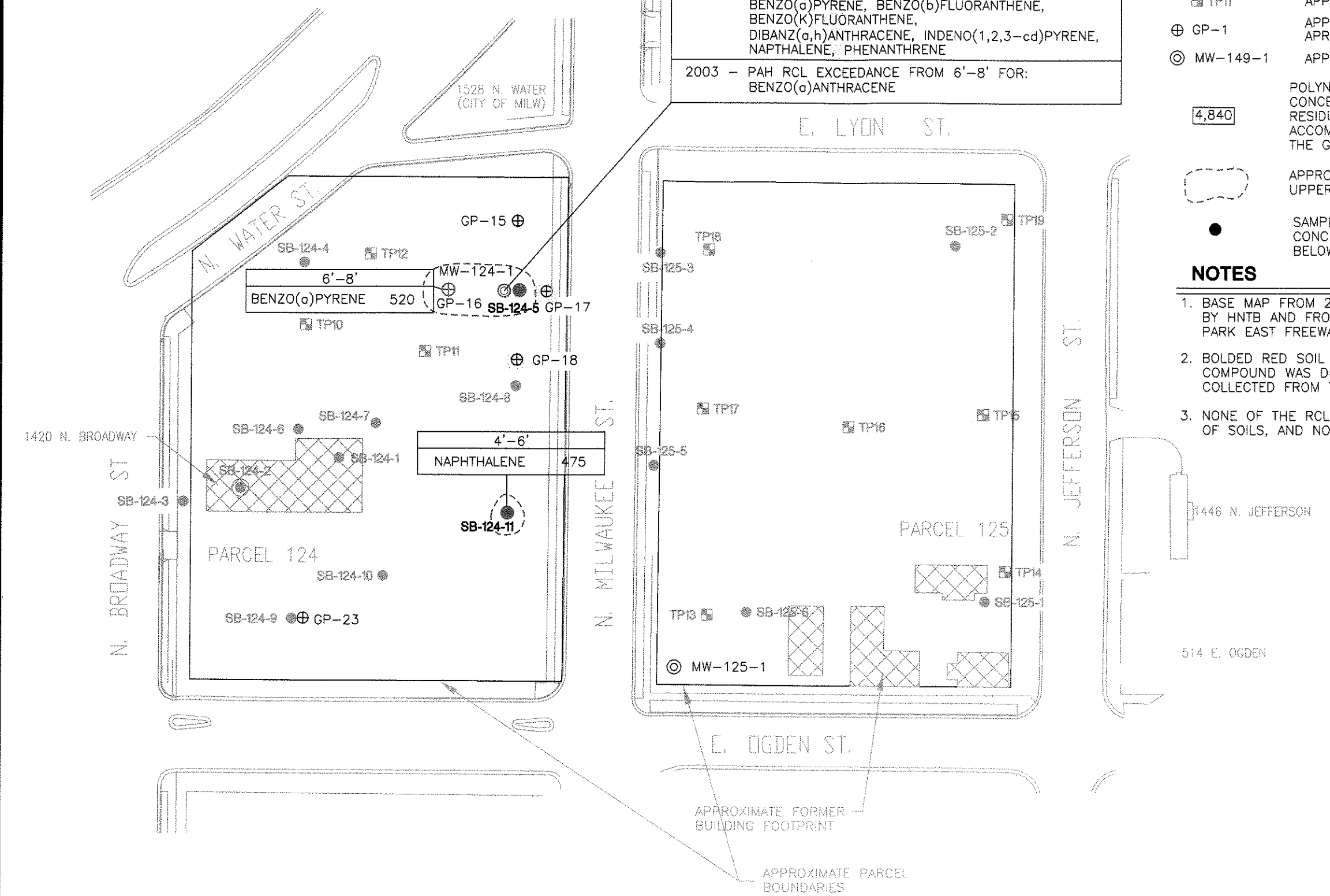
- SB-124-4 APPROXIMATE SOIL BORING LOCATION INSTALLED JUN 2001
- ⊙ SB-124-2 APPROXIMATE TEMPORARY WELL LOCATION INSTALLED JUN 2001
- ▣ TP11 APPROXIMATE TEST PIT LOCATION ADVANCED JUN 2003
- ⊕ GP-1 APPROXIMATE SOIL BORING LOCATION INSTALLED NOV 2003, APR 2004, OR JUN 2004
- ⊙ MW-149-1 APPROXIMATE MONITORING WELL LOCATION INSTALLED NOV 2003
- 4,840** POLYNUCLEAR AROMATIC HYDROCARBONS (PAH) COMPOUNDS AND CONCENTRATION (mg/kg) DETECTED IN SOIL SAMPLE ABOVE THE RESIDUAL CONTAMINANT LEVEL (RCL) IDENTIFIED ON THE ACCOMPANYING TABLES, AT THE SPECIFIED INTERVAL (FEET BELOW THE GROUND SURFACE)
- APPROXIMATE AREA OF TOTAL LEAD >250 mg/kg WITHIN UPPER 4 FEET OF SITE SOILS (DASHED WHERE INFERRED)
- SAMPLE COLLECTED EITHER DID NOT CONTAIN DETECTABLE PAH CONCENTRATIONS OR CONTAINED PAH CONCENTRATIONS BELOW THE PAH RCLs.

NOTES

1. BASE MAP FROM 2001 PHASE II REPORT FOR REDEVELOPMENT AREAS BY HNTB AND FROM WISDOT CONSTRUCTION DRAWINGS FOR PARK EAST FREEWAY.
2. **BOLDED RED** SOIL BORING LOCATIONS INDICATE THAT AT LEAST ONE PAH COMPOUND WAS DETECTED ABOVE THE RCL IN AT LEAST ONE SOIL SAMPLE COLLECTED FROM THIS LOCATION.
3. NONE OF THE RCL EXCEEDANCES WERE DETECTED IN THE UPPER 4 FEET OF SOILS, AND NONE APPEAR TO HAVE CONTAMINATED GROUNDWATER.

2001 - PAH RCL EXCEEDANCES FROM 6'-8' FOR:
 2-METHYLNAPHTHALENE,
 ACENAPHTHENE, BENZO(a)ANTHRACENE,
 BENZO(a)PYRENE, BENZO(b)FLUORANTHENE,
 BENZO(k)FLUORANTHENE,
 DIBANZ(a,h)ANTHRACENE, INDENO(1,2,3-cd)PYRENE,
 NAPHTHALENE, PHENANTHRENE

2003 - PAH RCL EXCEEDANCE FROM 6'-8' FOR:
 BENZO(a)ANTHRACENE



**PAH CONCENTRATIONS IN SOIL >RCLs
 FORMER PARK EAST FREEWAY
 REDEVELOPMENT AREA 3
 MILWAUKEE, WISCONSIN**

RMT	DWN. BY: MHS
	APPROVED BY: KWY
	DATE: JULY 2004
	PROJ. # 00-06493.02
	FILE # 64930204.DWG

FIGURE 5

PFISTER & VOGEL

APPROXIMATE PARCEL BOUNDARIES

1528 N. WATER (CITY OF MILW)

E. LYON ST.

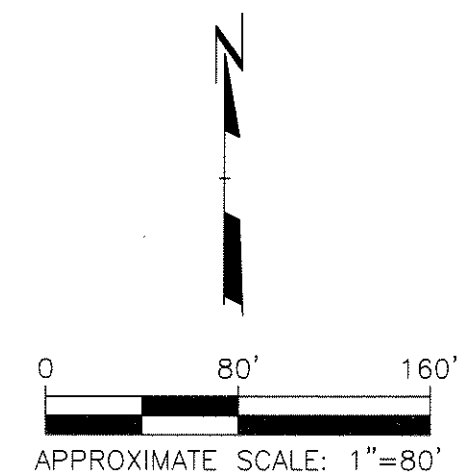
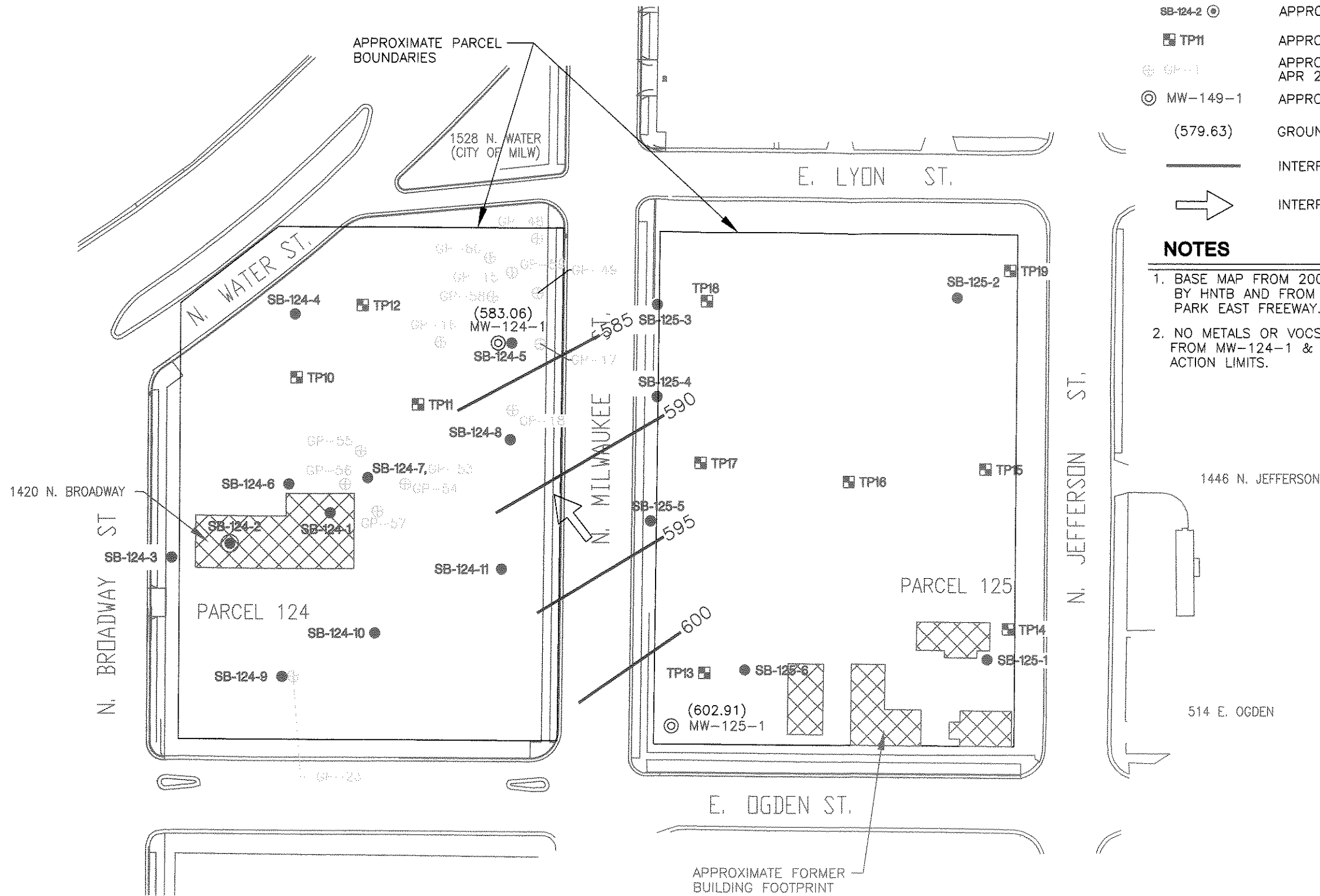
N. WATER ST.

LEGEND

- SB-124-4 APPROXIMATE SOIL BORING LOCATION INSTALLED JUN 2001
- ⊙ SB-124-2 APPROXIMATE TEMPORARY WELL LOCATION INSTALLED JUN 2001
- ▣ TP11 APPROXIMATE TEST PIT LOCATION ADVANCED JUN 2003
- ⊕ GP-11 APPROXIMATE SOIL BORING LOCATION INSTALLED NOV 2003, APR 2004, OR JUN 2004
- ⊙ MW-149-1 APPROXIMATE MONITORING WELL LOCATION INSTALLED NOV 2003
- (579.63) GROUNDWATER ELEVATION IN MONITORING WELL ON 3/31/04
- INTERPOLATED GROUND WATER ELEVATION CONTOUR
- ➔ INTERPOLATED GROUND WATER FLOW DIRECTION

NOTES

1. BASE MAP FROM 2001 PHASE II REPORT FOR REDEVELOPMENT AREAS BY HNTB AND FROM WISDOT CONSTRUCTION DRAWINGS FOR PARK EAST FREEWAY.
2. NO METALS OR VOCS HAVE BEEN DETECTED IN GROUNDWATER COLLECTED FROM MW-124-1 & MW-125-1 ABOVE THE RESPECTIVE NR140 PREVENTION ACTION LIMITS.



**GROUNDWATER CONTOUR MAP
FORMER PARK EAST FREEWAY
REDEVELOPMENT AREA 3
MILWAUKEE, WISCONSIN**



DWN. BY:	MHS
APPROVED BY:	KWY
DATE:	JULY 2004
PROJ. #	00-06493.02
FILE #	64930205.DWG

FIGURE 6